

# ScanCut

## The World's First Home and Hobby Cutting Machine with a Built-in Scanner

### The Perfect Addition to Your Sewing Room!

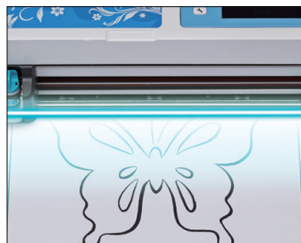
Sewing, quilting and appliqué just got whole lot easier with ScanNCut. Cut all original fabric pieces and custom quilt blocks with precision and ease - no need for scissors, a rotary cutter or even a ruler! Easily add seam allowances to assist in piecing together fabric for quilts, clothing and more. For virtually perfect placements of your stitches, draw in sewing guidelines to see exactly where your seam should be. Say goodbye to fussy-cutting of appliqués. Cut and prep any type of appliqué you want, add your seam allowance and you're ready to go!



CM550DX



See it.



Scan it.



Cut it.

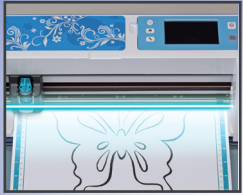


Create it.



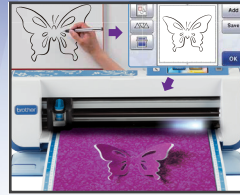
# ScanNCut

## Top 6 Reasons Why the ScanNCut Machine is a Cut Above the Rest



### 300 DPI Built-In Scanner

Scan virtually anything – a handmade drawing, a magazine clipping, cherished photos, and more – to create endless cut designs and save to the machine's memory.



### Scan-to-Cut-Data

Scan in your design and save it as a cut or draw file for use. The ScanNCut machine will create cut lines automatically. Then simply cut or draw.



### 840 Built-In Designs, including 100 Quilt Patterns, plus 5 Fonts

Choose from basic shapes, intricate designs, borders, quilt patterns, fonts and more. Simply select a design, and then have it cut out on your material of choice.



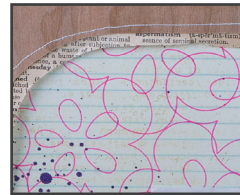
### Fabric Cut

Cut precise fabric shapes with ease! Pairing the erasable draw function with cutting, this machine offers the unique feature of drawing your seam allowance and provides precise sewing guidelines.



### Direct Cut

ScanNCut will scan your material, create the outline cuts, and allow you to select your design straight from the surface to cut out. Eliminate the hassle of hand-cutting designs from your favorite papers and fabrics!



### Pen Draw

The ScanNCut machine gives you the ability to change your cut file – whether it's from a previous scanned image or a built-in design, and replicate the design into a drawing in virtually seconds!



### Included Accessories:

- Standard Cut Blade Holder
- Standard Cut Blade
- Deep Cut Blade Holder
- Deep Cut Blade
- Standard Mat 12" x 12"
- Low Tack Adhesive Mat 12" x 12"
- 2 High Tack Adhesive Fabric Support Sheets
- 2 Iron-On Fabric Appliqué Contact Sheets
- Spatula
- Stylus
- Accessory Pouch

### Plus, Over \$200 in Added Value:

- Additional Standard Mat 12" x 12" \$17.99 MSRP
- 40 Additional Built-in Quilt Patterns\* \$70.50 Value
- Color Pen Set (6 Pens) \$11.99 MSRP
- Erasable Pen Set (2 Pens) \$7.99 MSRP
- Pen Holder \$14.99 MSRP
- 50 Special Appliqué Patterns on CD \$59.99 MSRP
- *Cut Up This Book*\* \$19.00 MSRP

**brother**  
at your side

For more information, call 1.800.4.A.Brother  
or visit [www.scanNcut.com](http://www.scanNcut.com)

    /brothercrafter

Specifications subject to change. \* Vs. CM100DM model. \**Cut Up This Book* includes templates for up to fifty one-of-a-kind, ready-to-cut papercraft projects designed by artist Emily Hogarth. Images are for illustrative purposes only. ©2013 Brother International Corporation. All rights reserved. Brother Industries, Ltd., Nagoya, Japan.